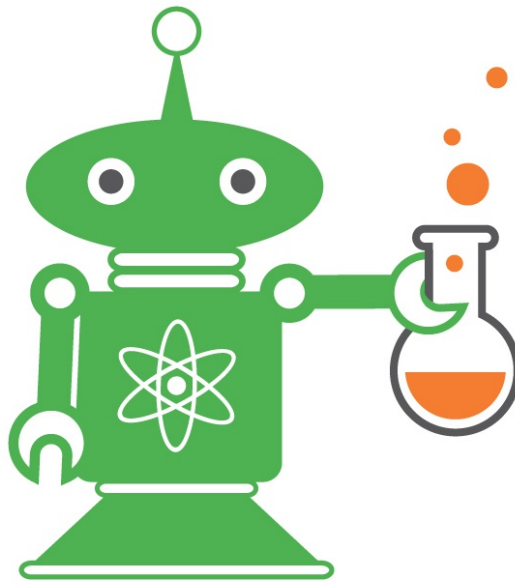


2011 Annual Report



SCIENCE

FROM SCIENTISTS

Letter from the CEO

Dear Friends,

Thank you for helping to make 2011 another successful year for Science from Scientists. We have been so fortunate to maintain the support of many and to have earned new support. To those who are new supporters, welcome! To those who have supported us for many years, a continued “thank you.”

In these times of intense global competitiveness, it is imperative for students in the United States to be knowledgeable and versatile in STEM (science, technology, engineering and math) related subjects. Science from Scientists aims to bring world-class scientists into the classrooms during school to teach challenging hands-on, frameworks relevant material to increase aptitudes and attitudes in STEM related subjects. Our commitment to working with students is year-long on a bi-weekly basis.

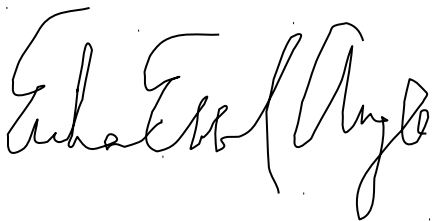
Science from Scientists has been consistently growing over the last several years. 2011 is no exception. We hired our first full-time employee and a director of development to assist with fundraising. We were able to add numerous additional schools and support staff, finishing up the year with programs running in new communities such as Newton and Winchester. In total, we reached 1,600 students in the Greater Boston area.

We were also able to create a unique donor benefits program as a “thank you” to those donors who have been so kind in supporting our cause – “CSI day” for the children of your employees!

How are the students responding to our programs? I have to share the following story. I was meeting with some of our instructors to discuss the program a few months ago. During the meeting I happened to overhear one of them talking to the other during a break. “It was so strange, after class, some of the kids came over and asked me for my autograph. Surprised, I asked, “why?” and the student said “you are a REAL Scientist! That is so cool!” The other instructor nodded excitedly and said “That has happened to me too!”

While we have many ways of demonstrating our academic impact, raising the perception of scientists in the eyes of the students to such a level, may trump them all

Thank you again for your support. We look forward to 2012!



Erika Ebbel Angle, CEO and Founder

Board

- Colin Angle, CEO iRobot
- Erika Ebbel Angle, CEO SfS
- Jim Ellard, CEO New England Biolabs
- Patricia Haddad, MA State Representative
- Patricia Lamarre, MA Dept. of Transportation
- Richard Merrill, Chemistry Teacher (retired)
- Josh Seftel, Television Director

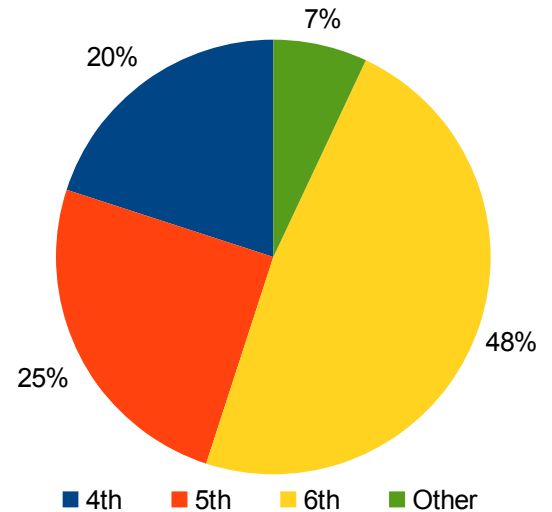
Executive Staff

- Erika Ebbel Angle, Chief Executive Officer
- Alicia Bielik, Chief Operations Officer
- Alison Fraser, Director of Development
- Maureen Griffin, Chief Financial Officer
- Jerrad Pierce, Chief Programs Officer

Quick Facts

- One half of our students are low-income.
- Thousands of students have worked with Science from Scientists over the years, many hundreds of them for several years.
- Nearly half of our students are non-Caucasian.
- We delivered over 500 hours of classroom enrichment in the 2010–2011 school year.
- We are constantly revising our 85 lesson plans, and develop a handful of new ones each year. These span the curriculum from acids to viscosity, cells to pendulums & cartography to xanthan gum.

Grade Level of Students Served



“

There were many excellent lessons taught this year. Some of the best were Electricity and Circuits, Light, Plants, Water, and Celestial Mechanics. These lessons involved various activities which gave the students an opportunity to explore and make valuable observations.

— Elisa LaPlante, 5th Grade Science Teacher, William McKinley Elementary School

4th grade McKinley students conducting an egg drop in Revere.

- 120 6th graders from Parlin previewed a college campus & visited the MIT Museum. This field trip was so popular last spring that we were asked to repeat the trip before the 2011–2012 school year was underway.
- 35 Boys & Girls Club members pondered the penguins at the New England Aquarium.
- 122 4th grade students from Whelan sought treasure at the Museum of Science.



“

6th grade Students from Parlin in Everett at MIT's "The Alchemist."

They bring a genuine love for science to all of the students. They make science not only educational but fun. Their hands on activities and interesting materials bring science to life for the students. They give students the understanding of why science is important and they make real life connections for the students. They bring what the students learn in a science textbook to life with their interesting facts and hands on practices. The Science from Scientists program has been a huge asset to the children of my classroom. It allows students to see what the world is made up of and it inspires them to keep inquiring about what else may make up the world around them. — Anonymous 4th grade teacher

Program Overview

Program: Module-based Instruction

Offered as a year-long in-class instructional program, Science from Scientists designs and teaches STEM lessons to students in grades 4–8. Our materials support and extend the Massachusetts Department of Education curriculum frameworks with instructional discussions and hands-on activities. Exploratory field trips can also be arranged to a variety of locations including the Museum of Science, New England Aquarium and MIT Museum.

Program: Science Fair

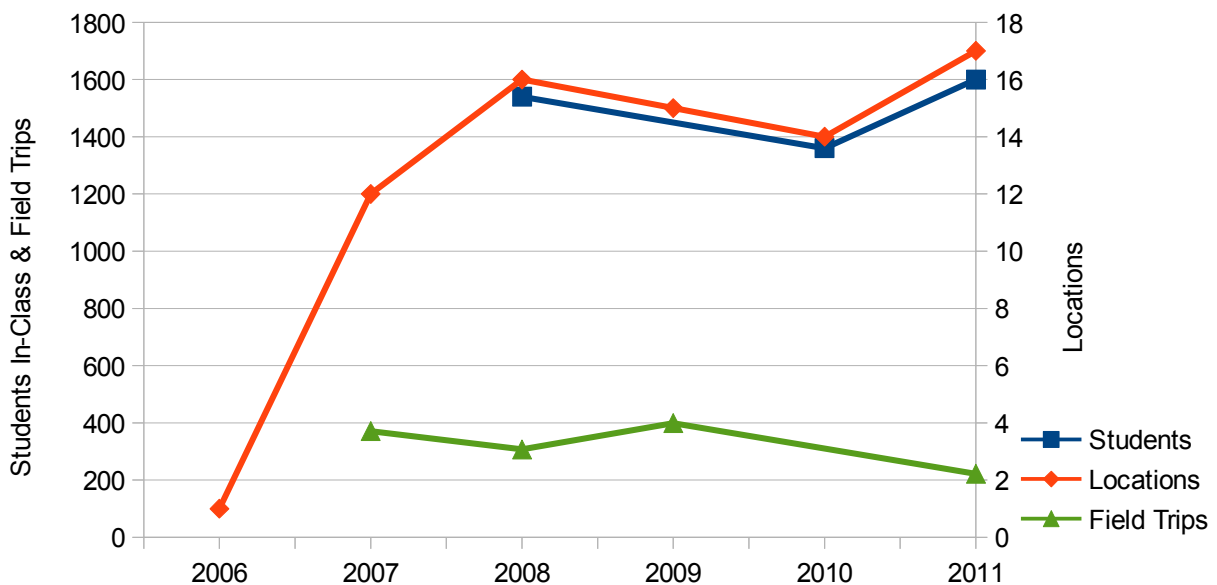
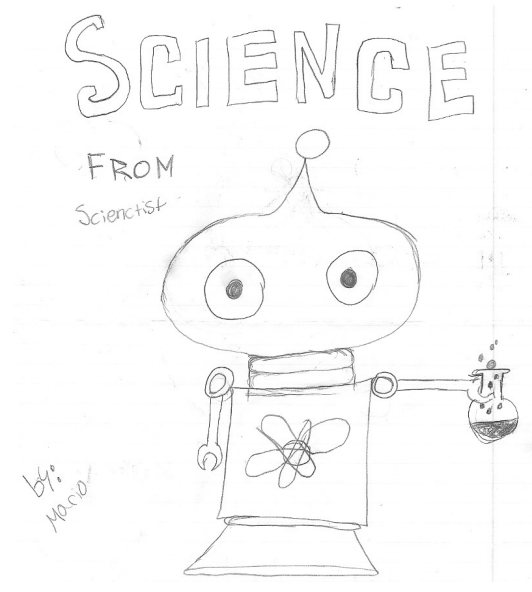
Science from Scientists instructors are available to assist teachers and instruct students in grades 4-12 through the science fair process from start to finish. Students learn about the scientific method, experimental design, data analysis, and creating an attractive, informative and succinct display. We are able to offer schools aid throughout the entire science fair process by: administering a science fair, offering additional guidance as tutors, or serving as judges.

Program: CSI Experience

We create a comprehensive forensic science mystery for students to tackle. Students are guided through a fun & informative experience with hands-on activities grounded in a customized storyline.

Annual Growth

Due to budget constraints resulting from cuts in corporate giving and government grants, limited programs were in place at select locations in the fall of 2009. Normal in-class instruction resumed at a reduced number of schools for the remainder of the 2010 academic year; although no field trips were offered.



Program Recipients



Module-based Instruction

Recipient	Since	Grades	Students	Minority	Low Income
A.C. Whelan Elementary, Revere	2008	4&5	110	42.4%	62.9%
Albert N. Parlin School, Everett	2007	5&6	100	70.4%	80.5%
Beachmont Elementary, Revere	2008	4&5	85	51.1%	68.7%
Boys & Girls Club of Cambridge, Medford & Somerville	2011	3–6	50	N/A	
Joseph A. Browne School, Chelsea	2010	6	100	92.5%	82.0%
Cohen Hillel Academy, Marblehead	2006	4–8	80	N/A	
Jackson School, Newton	2011	6	110	N/A	
Lafayette School, Everett	2007	5–8	210	54.5%	69.6%
Abraham Lincoln Elementary, Revere	2007	4&5	160	53.5%	67.3%
McCall Middle School, Winchster	2010	6	305	17.0%	5.4%
William McKinley Elementary, Revere	2007	5	80	69.6%	84.3%
Oak Hill Middle School, Newton	2011	5–8	40	37.0%	9.3%
John D. Runkle School, Brookline	2010	4	15	42.9%	7.8%
Sumner G. Whittier School, Everett	2008	5	60	72.3%	79.8%
Wright Science & Technology Academy, Chelsea	2010	6	90	91.9%	84.3%

Students served figures are approximate, with a total in excess of 1,600

Science Fair Assistance

- Shaloh House, Brookline MA
- Cohen Hillel Academy, Marblehead MA

“ They get the students excited about science! My students were interested in the staff themselves and asked questions after they left the first class about the fields the staff members were doing their studies in. That increases student interest in the lessons being taught. They also gave students a chance to do more hands-on science than they would have otherwise, using materials ... that they may never have seen up close otherwise.

– Kerri Babish, 6th Grade Science Teacher, Wright Middle School

Financial Summary

- Approximate budget for 16 schools: \$199,500
- Cost per school: approximately \$15,000
- Cost per student / year: \$125

Benefactors

“We would like to express our extreme gratitude to those corporations, foundations and individuals who help to support Science from Scientists. Your financial and in-kind donations help to make our programs possible in the community. Thank you very much.”

– Erika Ebbel Angle, CEO and Founder

Platinum Donors (\$100,000+)

U.S. Department of Education

Silver (\$10,000–\$24,999)

New England Biolabs
The Boston Foundation

Patron (\$500–\$4,999)

Bose
Caitlin & Cookman
Massachusetts High Technology Council

Gold (\$25,000–\$99,999)

Verizon

Bronze (\$5,000–\$9,999)

Shire Pharmaceuticals

And the generous support of numerous private donors.